

Get the whole family in the picture with Memory Maker.

An incredible new way to stretch your family vacation photos:

It all starts with **Disney PhotoPass™** Service, where you can get your pictures taken by **Disney PhotoPass Photographers** at hundreds of locations throughout **Walt Disney World® Resort**. Then, when you purchase **Memory Maker**, you can get unlimited digital photos to view, share and download through your **My Disney Experience** account!

Purchase Memory Maker today at Camera Center in Future World (next to Spaceship Earth).

Memory Maker includes photos taken during the Memory Maker window and linked to the Memory Maker Guest's Disney account. Photos will expire pursuant to the expiration policy at mydisneyphotopass.disney.go.com/help-and-support. If Memory Maker is added to your Magic Your Way Package or purchased at the advance purchase price, any photos taken within three days from the date Memory Maker is purchased will not be included and must be purchased separately. Valid Theme Park admission required for certain photo locations. Family & Friends media sharing is subject to the MyMagic+ Terms and Conditions. Not responsible for missing, lost or damaged photos. Subject to Memory Maker Terms and Conditions. ©Disney ©Disney/Pixar MM+14-30783 ©2014 Lucasfilm Ltd. & TM.

DISCOVER VACATIONS YOU NEVER OUTGROW.

Payment Options

Walt Disney World® Resort accepts Disney Visa® Cards, **Disney Rewards®** Redemption Card, Disney Gift Card, Visa®, MasterCard®, Discover®, American Express®, Diners Club®, JCB®, traveler's checks, cash and Disney Dollars.

Disney Vacation Club

Look for the **Disney Vacation Club** icon on your map.

©Disney

Discover the Wonder

IllumiNations: Reflections of Earth FP+
Presented by Siemens

The World Showcase Promenade comes alive nightly with the brilliance and splendor of music, lights, lasers, water fountains, and custom pyrotechnics in our signature nighttime spectacular, **IllumiNations: Reflections of Earth**. See Times Guide.

Shopping

Here at **Epcot®** you don't need a passport to embark on an international shopping spree! Shop the World Showcase pavilions and you will discover authentic goods representing cultures around the globe — from delicate fragrances in France to specialty teas in the United Kingdom.

Merchandise Package Delivery and Pickup

Instead of carrying your purchases all day, have them delivered to The Gift Stop near the main Park entrance or to World Traveler at International Gateway and pick them up as you exit the Park. Please allow three hours for delivery. If you prefer, have your purchases delivered directly to your **Disney Resort** hotel. See a **Merchandise Cast Member** for more details.

Dining

Dining Reservations

Table-Service restaurants book quickly, so please make reservations at www.disneyworld.com/dine, by calling 407-WDW-DINE (939-3463), or by visiting any Guest Relations location. *Reservations must be canceled at least one day prior or a per person cancellation charge may be incurred (charge varies by location).*

Mickey Check

Look for the Mickey Check on menus throughout the **Walt Disney World® Resort** for kids' meals and other items that meet Disney Nutrition Guidelines. For more information, please visit www.disneymickeycheck.com.

For special dietary needs, please see a restaurant manager or chef.

Flower & Garden Festival Exclusives

Disney Gift Cards

Simply the best way to experience the festival! Just swipe to pay for food and more. Disney Gift Cards are available at all Festival Merchandise locations.

Festival Passport

Pick up a **Epcot International Flower & Garden Festival** Passport and get it stamped at stops along the way! Passports are available at the Festival Center, Festival Merchandise locations, Gardens and at all Outdoor Kitchens.

Don't Forget Your Times Guide!

Pick up the weekly Times Guide to get additional information regarding shows, entertainment, operating hours and even character appearances!

- Entertainment, outdoor shows and other Guest offerings are subject to change without notice.
- Theater venues have limited capacity and may fill up before show time. Please ensure your entire party is together prior to entering the facility.
- Some walkways in the Park may close periodically.

Select, Reserve, Go, Repeat!

Save time with **Disney FastPass+**

With **Disney FastPass+®** service, you can reserve access to some must-do fun and even make changes on the go with the **My Disney Experience** app**.

Select up to three **Disney FastPass+** experiences in one Theme Park per day.

Head to your chosen **FastPass+** experience entrances with your **MagicBand** or card during your designated arrival windows.

Visit a **FastPass+** kiosk after you redeem your initial selections to reserve additional experiences.

To get started, download the **My Disney Experience** app for free or look for this icon on the map and go! **FP+**

You can also visit **MyDisneyExperience.com** on your mobile browser. Wi-Fi is available in most areas.

*Valid Theme Park admission and online registration required. **Disney FastPass+** attractions and entertainment experiences, the number of selections you can make and available arrival windows are limited. **Availability subject to handset limitations and features may vary by handset or service provider. Message, data and roaming rates may apply. Coverage not available everywhere. If you're under 18, get your parent's permission first.

©Disney MMPLUS-15-39361

Tips & Information

Guest Relations

Please visit Guest Relations located East of Spaceship Earth for:

- Questions and Concerns
- Ticket Upgrades
- Separated Guest Assistance
- Lost and Found
- Services for Guests with Disabilities

Services for International Guests are available at Guest Relations.

Los Servicios para huéspedes internacionales están disponibles en la oficina de Guest Relations.

Des services pour les visiteurs internationaux sont disponibles au Guest Relations.

Serviços para visitantes internacionais estão disponíveis no Guest Relations.

Dienste für internationale Gäste sind bei der Gästebetreuung erhältlich.

ゲストリレーションにて世界各国からのゲストの皆様向けのサービスをご案内しております。

Park Rules

To provide a comfortable, safe, and enjoyable experience for our Guests, please comply with Park rules, signs and instructions including:

- All bags are subject to inspection prior to admission.
- Proper attire is required.
- Smoking is allowed only in designated areas.
- Weapons are strictly prohibited.

Additional details and a complete listing of Park rules are available at Guest Relations or www.DisneyWorld.com/ParkRules.

DISNEY WILD ABOUT SAFETY® TIPS

As Timon and Pumbaa would say, "Be aware, it's a jungle out there!" Download the **Disney Wild About Safety** mobile app or visit www.disneywildaboutsafety.com for more safety tips and fun games.

Please look for the recycling containers throughout the Park and join us in our commitment to the environment.

Please do not feed the birds or other animals, and do not throw objects (including coins) into the water.

Leaving the Park? All Guests who wish to leave the Park and return later in the day may do so by presenting their original admission media.

- To get to the **Epcot® parking lot**, take a Parking Tram located outside the front of the Park.
- To get to **Magic Kingdom® Park**, take a Monorail to the Transportation and Ticket Center and then a Monorail or Ferryboat to the Park.
- To get to **Disney's Animal Kingdom® Theme Park**, take a Bus located outside the front of the Park.
- To get to **Disney's Hollywood Studios®**, walk or take a FriendShip Boat from International Gateway, or take a bus located outside the front of the Park.
- To get to the **Downtown Disney® Area**, take Resort Transportation to any **Disney Resort** hotel, and then another Bus to the **Downtown Disney Area**.
- To get to **Disney's Typhoon Lagoon Water Park** before 2:00pm, take Resort Transportation to any **Disney Resort** hotel, and then a Bus to the **Downtown Disney Area** and **Disney's Typhoon Lagoon Water Park**. After 2:00pm, take a Bus directly to **Disney's Typhoon Lagoon Water Park**.
- To get to **Disney's Blizzard Beach Water Park**, take Resort Transportation to any **Disney Resort** hotel, and then a Bus to the Park.
- To get to **Disney's Yacht & Beach Club Resorts, Disney's Boardwalk Inn and Villas** or the **Walt Disney World Swan and Dolphin Hotels**, walk or take a FriendShip Boat from International Gateway.
- To get to all other **Disney Resort** hotels, take a Bus located outside the front of the Park.

©Disney 3/15

MIX Paper from responsible sources FSC® C007828

Upcoming Events

2015

Star Wars Weekends
Disney's Hollywood Studios®
May 15–17, 22–24, 29–31 and June 5–7, 12–14

Night of Joy
Magic Kingdom® Park
September 11 and 12

Mickey's Not-So-Scary Halloween Party
Magic Kingdom Park
September 15, 18, 20, 22, 25, 27;
October 1, 2, 4, 6, 8, 9, 12, 13, 15, 16, 18, 20, 22, 23, 25, 27, 29, 31;
November 1

Epcot® International Food & Wine Festival
Presented by CHASE®
Epcot®
September 25–November 16

2016

Epcot® International Flower & Garden Festival
Epcot
March 2–May 15

For more information, please visit disneyworld.com.

Special Thanks to our Epcot International Flower & Garden Festival Participants

Audubon Florida	National Park Foundation
Bonsai Societies of Florida	National Watermelon Promotion Board
Cherry Lake Tree Farm	National Wildlife Federation
Commercial Companies, Inc.	The Nature Conservancy
Dora Landscaping Company	Nueske's®
EcoWalls, LLC	Pentair Aquatic Eco-Systems, Inc.
Enviro Tree Service	Rain Bird Corporation
Florida Federation of Garden Clubs, Inc.	Simply Orange®
Florida Nursery, Growers and Landscape Association	The Original Sauce Man LLC
ForeverLawn, Inc.	Twinings of London®
Fresh from Florida®	University of Florida IFAS/Extension
GoGo squeezeZ™	ValleyCrest Landscape Maintenance, Inc.
Joffrey's Coffee & Tea Co.®	Visionscape Landscaping Solutions
Landscape Structures, Inc.	
LegacyScapes	

EpcotInSpring.com

English
GUIDEMAP

Epcot

EPCOT INTERNATIONAL

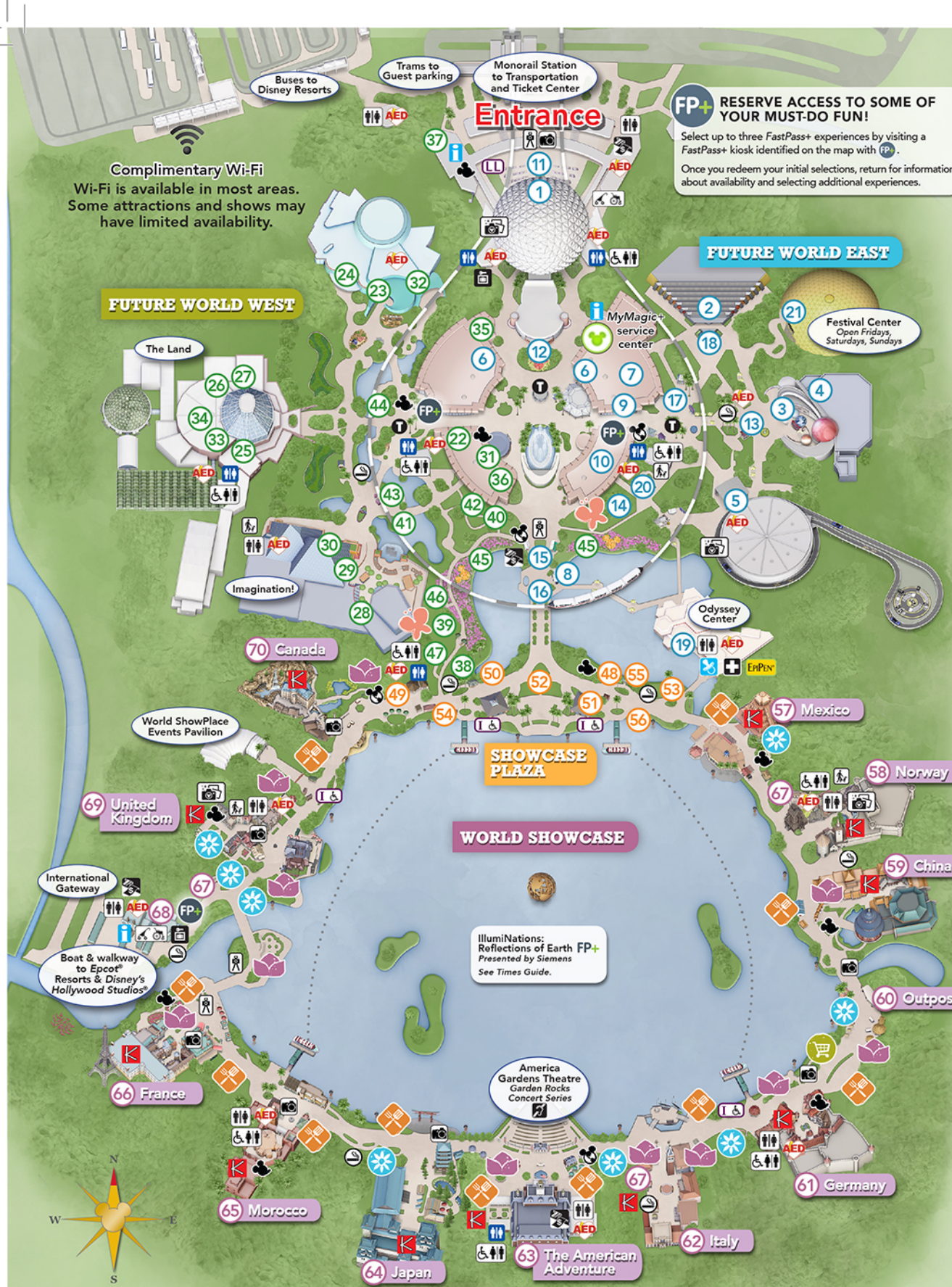
FLOWER and GARDEN FESTIVAL EST. 1994

• FRESH EPCOT •

MARCH 4–MAY 17, 2015

Download the **My Disney Experience** app from an app store or by scanning this code to access real-time Park information (details inside). Or visit MyDisneyExperience.com on your mobile browser.

Show the world your Disney Side #DISNEYSIDE



FUTURE WORLD EAST

- Spaceship Earth** Presented by Siemens® **FP+** **HC** **RC** **DD** Explore the history of communications, from the Stone Age to the Computer Age.
- Ellen's Energy Adventure** **HC** **RC** **DD** Take a multimedia romp through time and Ellen DeGeneres' subconscious. *45 minutes.*
- Mission: SPACE** Presented by HP **FP+** **HC** **RC** **DD** Experience NASA-style training with a simulated space launch. Join the Orange Team for an intense journey or the Green Team for a milder mission. *Expectant mothers should not ride.*
- Advanced Training Lab** **HC** **RC** **DD** Further your astronaut training in this interactive play area.
- Test Track** Presented by Chevrolet® **FP+** **HC** **RC** **DD** Create your own virtual concept vehicle and put it through the paces on the exhilarating hills, hairpin turns and straight-aways of the Test Track circuit.
- Innoventions East & West** **HC** **RC** **DD** Imagine and invent in two pavilions housing interactive games and exhibits.
- The Sum of All Thrills™** Presented by Raytheon® **HC** **RC** **DD** Innoventions East: Uncover your inner engineer as you design and customize your own thrill ride!
- Disney Phineas and Ferb: Agent P's World Showcase Adventure** **HC** **RC** **DD** Search for clues with Perry the Platypus to defeat Dr. Doofenshmirtz before he takes over World Showcase. *Interactive adventure. At your own pace. Additional starting points at International Gateway. Look for 67 on the map.*
- Electric Umbrella** Hosted by Coca-Cola® **LD** **S** Angus burgers, chicken and freshly tossed salads.
- Mouse Gear** One-stop shopping destination for Disney Character gifts and Park souvenirs.
- NEW! Goofy About Spring** See Goofy, Chip 'n' Dale and friends in topiary as they welcome spring!
- NEW! Spring is in the Air** Topiary Butterflies.
- Disney•Pixar's Buzz Lightyear Topiary**
- Cactus Road Rally with Disney•Pixar's Mater and Lightning McQueen Topiaries** *Closes at dusk.*
- Farmer Mickey Mouse and Minnie Mouse Topiaries**
- Phineas and Ferb Topiaries**
- Gardener's Palette** Presented by Rain Bird Corporation Explore a palette bursting with vibrant color and see color theories and language come to life using vivid blooms and foliage.
- NEW! Prehistoric Plants**
- NEW! Trial Garden**
- Purple Martins** Presented by Audubon Florida
- Garden Gifts**

FUTURE WORLD WEST

- Epcot Character Spot** **FP+** **HC** **RC** **DD** Meet Mickey and his pals in this cartoon setting!
- The Seas with Nemo & Friends** **FP+** **HC** **RC** **DD** Frolic with a cast of undersea characters in this attraction based on Disney•Pixar's *Finding Nemo*.
- Turtle Talk With Crush** **FP+** **HC** **RC** **DD** Engage in a real time Q-and-A with your favorite totally tubular turtle.

FLOWER & GARDEN FESTIVAL OFFERINGS

- Outdoor Kitchen** Disney Dining plans accepted. See menu boards for eligible Snacks.
- Topiary**
- Play Garden**
- Garden**
- Festival Merchandise**

LEGEND

Symbols on Map

- Amenities**
- Restrooms
- Accessible Restrooms
- Companion Restrooms
- First Aid® Presented by Florida Hospital
- EpiPen® (epinephrine) Auto-Injector
- Guest Relations
- ATMs Presented by Chase®
- Automated External Defibrillators
- Smoking Locations

- Baby Care Center
- Stroller and Wheelchair Rentals
- Locker Rentals
- Service Animal Relief Areas
- Disney PhotoPass® Photographers
- Memory Maker Sales Center
- Nikon® Picture Spot
- Assistive Listening
- Park Information
- Character Greetings
- Disney Vacation Club® Information Center

Tips and Show Times

- Kidcot Fun Stops
- IllumiNations Viewing for Guests with Disabilities
- Leave A Legacy Locator
- MyMagic+ service center
- FastPass+ kiosks available in English, Spanish and Portuguese.
- *Emergency services available by calling 911.

Symbols in List

- Attraction/Show Considerations**
- FastPass+ experience
- Single Rider Queue
- Physical Considerations
- Minimum Height Requirement
- May remain in wheelchair/ECV
- Must transfer from wheelchair/ECV
- Must transfer to standard wheelchair
- Must transfer to standard wheelchair, and then to ride vehicle
- May be frightening for children

Devices Available at Guest Relations

- Assistive Listening
- Handheld Captioning
- Video Captioning
- Audio Description
- Shopping

Dining

All dining locations listed accept the Disney Dining plans unless otherwise noted. Reservations recommended. Call 407-WDW-DINE (939-3463).

B - Breakfast **L** - Lunch
D - Dinner **S** - Snack
\$ = \$14.99 and less per adult
\$\$ = \$15-\$29.99 per adult
\$\$\$ = \$30-\$59.99 per adult
See www.disneydiningpricinginfo.com for pricing details.

Special Considerations for Attractions

SAFETY: Please abide by all safety warnings and notices.

Supervise children at all times. Children under age 7 years must be accompanied by a person age 14 years or older.

For your safety while on attractions, remain seated with hands, arms, feet and legs inside the vehicle. Supervise children.

Physical considerations on designated attractions: **WARNING!** For safety, you should be in good health and free from high blood pressure, heart, back or neck problems, motion sickness, or other conditions that could be aggravated by this adventure. Expectant mothers should not ride.

- Soarin'®** **FP+** **HC** **RC** **DD** Take flight as you hang glide above the breathtaking vistas of California.
- Living with the Land** Presented by Chiquita® **FP+** **HC** **RC** **DD** Sail through the greenhouses of The Land Pavilion to see nine-pound lemons and more!
- The Circle of Life** **HC** **RC** **DD** Learn about conservation in this film featuring commentary from Timon and Pumbaa of *The Lion King*. *20 minutes.*
- Captain EO** **FP+** **HC** **RC** **DD** Join Michael Jackson as he and his space crew bumble, sing and dance through a 3-D cosmic crusade. *18 minutes.*
- ImageWorks** **HC** **RC** **DD** Explore, experience and create in this interactive play area.
- Journey Into Imagination With Figment** **FP+** **HC** **RC** **DD** Follow Figment on this whimsical open-house tour of the Imagination Institute.
- Fountain View** **S** Starbucks® Espresso, Artisan breakfast sandwiches, and house-made Disney pastries.
- Coral Reef Restaurant** **LD** **S** Seafood, steaks and more.
- Sunshine Seasons** **BLD** **S** Seasonal soups, salads, sandwiches and desserts.
- Chip 'n' Dale's Harvest Feast at The Garden Grill** Hosted by Smucker's® **D** **S** **S** Character dining with Chip 'n' Dale and friends. American cuisine.
- Art of Disney** Collectibles including framed artwork, sculptures and Vinylmation Figures.
- Club Cool** Hosted by Coca-Cola® Exclusive Coca-Cola merchandise and complimentary samples of soft drinks from around the world.
- The Gift Shop** Merchandise Package Pickup. Located near the main entrance.
- Urban Farm Eats** Kale Salad; Quinoa Vegetable "naanwich"; Ghost Pepper dusted Tilapia; Cucumber Lemon Spa Water with a sprig of fresh Mint; Hess Shirtail Creek Vineyard, Chardonnay; King Estate Acrobot Pinot Noir; Urban Mary; Crispin Blackberry Pear Cider.
- Disney•Pixar's Mike & Sulley's Monstrous Garden** Presented by Landscape Structures, Inc. See some of your favorite Disney•Pixar's *Monsters University* characters in topiary and experience this play zone.
- Tinker Bell Topiary**
- Fantasia Topiaries**
- Butterflies on the Go** Presented by GoGo squeeZ™ Discover the story of the Monarch butterfly's epic journey across the continent, see butterflies emerge from their chrysalis. *Closes at dusk.*
- NEW! Disney•Pixar's Inside Out Emotion Garden** Turn your emotions inside out at an imaginative photo location and garden inspired by Disney•Pixar's upcoming original movie—in theaters June 19.
- NEW! Health & Healing Garden**
- Festival Blooms**
- NEW! Nature Rocks** Presented by The Nature Conservancy
- Backyard Habitat** Presented by National Wildlife Federation
- Duffy the Disney Bear** Meet Mickey's world-traveling teddy bear!
- Refreshment Port** **LD** **S** Ice cream and frozen drinks.

SHOWCASE PLAZA

- Pineapple Promenade** Spicy Hot Dog with Pineapple Chutney; Pineapple Soft-Serve with Sammy's Beach Bar Red Head Macadamia Nut Flavored Rum or Parrot Bay Coconut Rum; Frozen Desert Violet Lemonade; Berry Tea Cocktail with Twinings® Cold-Brewed Mixed Berry Tea; Sparkling Pineapple Wine; Ace Pineapple Hard Cider.
- Joffrey's Coffee & Tea Co.®**
- NEW! Anna and Elsa Topiaries** For the first time in forever, see Anna and Elsa from Walt Disney Animation Studios hit *Frozen* in topiary form.
- NEW! Bold Bromeliads**
- Garden Emporium**
- Garden Oasis**
- Garden Treasures**
- Mexico**
- Gran Fiesta Tour Starring The Three Caballeros** **HC** **RC** **DD** Discover the sights of Mexico and the antics of three feathered amigos on this boat ride.
- San Angel Inn Restaurante** **LD** **S** Authentic Mexican cuisine. Premium margaritas and tequilas.
- La Hacienda de San Angel** **D** **S** Regional Mexican cuisine. Premium margaritas and tequilas.
- La Cantina de San Angel** **LD** **S** Nachos, tacos, quesadillas, beer and margaritas.
- La Cava del Tequila** **S** More than 200 tequilas and handcrafted margaritas. *Not on Disney Dining plans.*
- Jardin de Fiestas** Achote marinated pork taco; Veggie Quesadilla; Mexican Chocolate Custard; Blueberry/Pomegranate Margarita; Tecate with Patrón Citrónge; Mexican Sangria; Tequila Flight.
- NEW! Pepper Fire Garden**
- Extraordinary Orchids**
- Norway**
- Princess Storybook Dining at Akershus Royal Banquet Hall** **LD** **S** **S** Character dining with Disney Princesses. American and Norwegian cuisine.
- Kringla Bakeri Og Kafe** **S** **S** Pastries and sandwiches.
- China**
- Reflections of China** **HC** **RC** **DD** View the places and faces of the world's most populous country in this Circle-Vision 360 film. *14 minutes.*
- Nine Dragons Restaurant** **LD** **S** **S** Chinese cuisine, wine and beer.
- Lotus Blossom Café** **LD** **S** Egg rolls and orange chicken with rice.
- Lotus House** Kung Pao Chicken Bun; Beijing Style Candied Strawberries; Vegetable Spring Roll; Oolong Peach Bubble Tea; Kung Fu Punch; South Sea Storm; Honey Mango Wine Cooler; Tsingtao Beer; Plum Wine.
- Year of the Sheep Topiary**
- Outpost**
- Simba and friends Topiaries**
- NEW! Monkey Kingdom Sand Sculpture** In recognition of the Disneyanure release of *Monkey Kingdom*, see a new sand sculpture come to life starting on April 17 with the reveal of the completed sand sculpture on Earth Day, April 22.

WORLD SHOWCASE

- Germany**
- Biergarten Restaurant** **LD** **S** **S** **S** Oktoberfest buffet with live entertainment. German cuisine.
- Sommerfest** **LD** **S** Bratwurst, potato salad, beer and desserts.
- Karamell-Küche** Featuring Werther's® Original Caramel Freshly made caramel corn, caramel covered apples and strawberries.
- Florida Fresh** Watermelon Salad; Shrimp and Stone Grits; Florida Blueberry and Lemon Curd Tart; Watermelon Passion Fruit Slush; Key Lime Sparkling Juice; Blonde Ale; Channel Marker Red Ale; Feast of Flowers Farmhouse Ale (Festival exclusive); Jai Alai®; Beer Flight
- Snow White and the Seven Dwarfs Topiaries**
- Garden Boutique**
- Italy**
- Tutto Italia Ristorante** **LD** **S** **S** Pasta and fine Italian specialties.
- Tutto Gusto Wine Cellar** **LDS** **S** **S** Italian wines and imported cheeses. *Not on Disney Dining plans.*
- Via Napoli Ristorante e Pizzeria** **LD** **S** **S** Italian pastas, wood-fired pizzas, Piatti alla Parmigiana and tiramisu.
- Primavera Kitchen** Pinwheel of Mozzarella, Prosciutto, Ciabatta Bread; Cheese Manicotti; Lemon Custard with Raspberries; Pinot Grigio; Chianti; Prosecco; Corbinello; Moscato; Bellini; Rossini; Frozen Italian Primavera; Moretti Lager and La Rossa.
- Lady and the Tramp Topiaries**
- NEW! Miss Piggy Topiary and Tour de Fleurs Garden**
- NEW! Pizzeria Garden**
- The American Adventure**
- The American Adventure** **HC** **RC** **DD** Explore the past and future of America through film, music and Audio-Animatronics®. *30 minutes.*
- Liberty Inn** Hosted by Coca-Cola® **LD** **S** Angus burgers, hot dogs, chicken, steak and freshly tossed salads.
- Fife & Drum Tavern** **LD** **S** Turkey legs, frozen beverages and beer.
- Espresso, Coffee and Pastries at The American Adventure** Presented by Joffrey's Coffee & Tea Co.® Chocolate Stout latte featuring Monin chocolate, caramel and hazelnut with milk and espresso; Iced Bailey's latte featuring Bailey's Irish Cream liqueur with milk and espresso over ice.
- THE SMOKEHOUSE: Barbecue and Brews** Pulled Pig Slider; Beef Brisket Burnt Ends Hash; Smoked Debreziner Sausage; "Piggylicious" Bacon Cupcake; Floridian Hefeweizen; Category 3 IPA; Maple Bacon Stout; Billy's Chilies; Beer Flight; The Original Rib Shack Red Wine; Frozen Lemonade; Frozen Lemonade with Palm Ridge Reserve Whiskey; R.C. Sweet Tea made with Twinings® Cold-Brewed English Classic Tea.
- Disney•Pixar's Woody Topiary**
- Japan**
- Teppan Edo** **LD** **S** **S** Steak, seafood and chicken—grilled in front of you by Teppan Chefs.
- Tokyo Dining** **LD** **S** **S** Sushi, bento box, grilled items and traditional Japanese cuisine.
- Katsura Grill** **LD** **S** Teriyaki combinations, udon noodles, sushi and curry.
- Kabuki Cafe** **S** **S** Shaved ice, sushi snacks, Japanese beers and cold beverages.
- Hanami** Frushi; Teriyaki Curry Bun; Salmon Sushi; Kirin Draft; Yuzu Plum Wine Slush; Strawberry Negori; Karatamba Sake.

- NEW! Japanese Mini Garden**
- Morocco**
- Restaurant Marrakesh** **LD** **S** **S** Beef, lamb and chicken dinners with a live belly dancing show.
- Tangierine Café** **LD** **S** Chicken and lamb shawarma, wraps and salads.
- Spice Road Table** **LD** **S** Moroccan small plates and specialty beverages featuring regional flavors from the Mediterranean.
- Taste of Marrakesh** Harissa Chicken Kebab; Falafel Pocket with cucumber tomato salad and Tahini Sauce; Pistachio Baklava; Desert Rose; White Sangria; Guerrouane Red; Mint Iced Tea.
- NEW! Botanica Botánico** Seafood Ceviche; Cachapa con Queso; White Corn Arepa; Coconut Tres Leches; Polar Beer; La Tizana; Monte Paschoal Reserve Tannat; Monte Paschoal Natural Brut White Sparkling Wine.
- France**
- Impressions de France** **HC** **RC** **DD** Experience the grandeur and charm of the French countryside through film. *20 minutes.*
- Chefs de France** **LD** **S** **S** Onion soup, filet mignon and crème brûlée.
- Monsieur Paul** **D** **S** **S** Roasted duck, seafood and soufflés.
- Les Halles Boulangerie & Pâtisserie** **S** **S** Fresh baguette sandwiches, pastries and baked goods.
- L'Artisan des Glaces** **S** **S** Artisanal ice cream and sorbets.
- Fleur de Lys** Parisian style dumpling with vegetables and mushrooms; Pulled Duck confit, with garlic and parsley potatoes; Large Strawberry marshmallow macaron; Ice Pop Peach Grand Mariner Cocktail; La Vie en Rose St-Germain Vodka Slush; Kir Imperial with Sparkling Wine and Chambord Liqueur; Beer Kronenbourg Blanc 1664.
- Belle and Beast**
- Cinderella and Prince Charming Topiaries**
- International Gateway**
- Disney Phineas and Ferb: Agent P's World Showcase Adventure** **HC** **RC** **DD** Search for clues with Perry the Platypus to defeat Dr. Doofenshmirtz before he takes over World Showcase. *Interactive adventure. At your own pace. Additional starting point at Future World East. Look for 8 on the map.*
- World Traveler Merchandise Package Pickup.**
- United Kingdom**
- Rose & Crown Pub & Dining Room** **LD** **S** **S** Steaks, fish and ale.
- Yorkshire County Fish Shop** **LD** **S** Fish and chips, beverages and ale.
- Peter Pan, Captain Hook and Tick Tock Croc Topiaries**
- NEW! Pollinator's Paradise with Winnie the Pooh Topiary**
- English Tea Garden** Presented by Twinings of London®
- NEW! Shakespeare Garden**
- Canada**
- O Canada!** **HC** **RC** **DD** View the very best Canada has to offer in this Circle-Vision 360 film. *14 minutes.*
- Le Cellier Steakhouse** **LD** **S** **S** **S** Steaks, pasta and seafood.
- Joffrey's Coffee & Tea Co.®**
- Bambi and friends Topiaries**